



To be the best, or to be nothing

2016



E-VANS



CONTENTS

Overview

Products

>> **Frame System**

>> **Ring-lock System**

>> **Props**

>> **Others**

Product procedure

Quality System

>> **Raw material control**

>> **Production Control**

>> **Final Inspection**

>> **Package and shipping**

Global Network

Contact Us





E-VANS

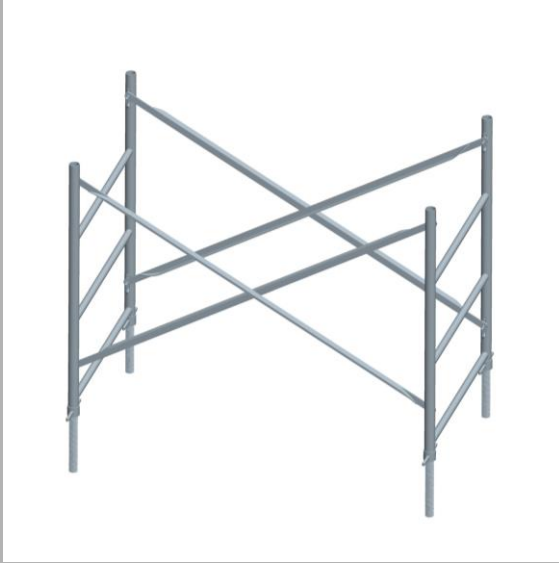


OVERVIEW

Shanghai Evans is one of the leading companies in scaffolding business, with more than 8 years in the industry, we are able to design and manufacture the scaffolding and steel structure products, with the capacity of produce more than 200 containers per year to our client.



E-VANS



FRAME-HiLoad

The Hi-Load system is a versatile, robust system that has met the concrete construction industry's most demanding shoring requirements for more than 30 years.

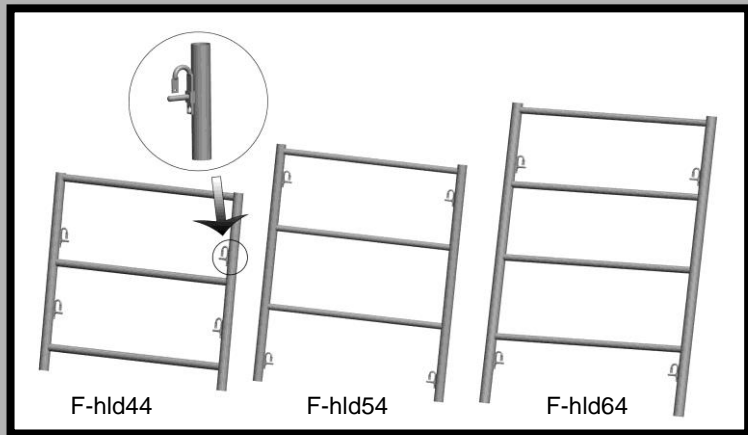
The Hi-Load's frame widths make it the system of choice for buildings that require forming around a large number of beams and column drops.



E-VANS



Hi-Load Frames

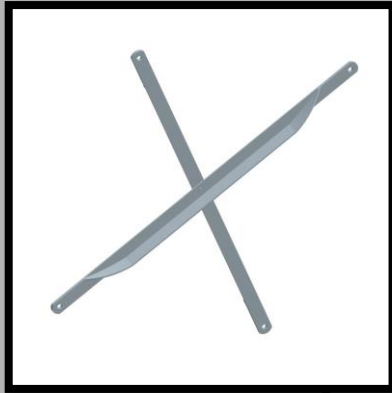


Part No.	Description	Unit Weight
F-hld44	SAR HiLoad 4' x 4'	21.94kg
F-hld54	SAR HiLoad 5' x 4'	25.21kg
F-hld64	SAR HiLoad 6' x 4'	31.21kg

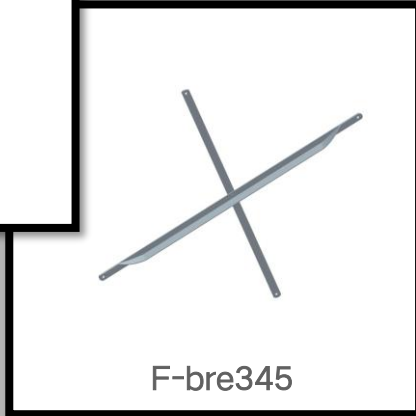


E-VANS

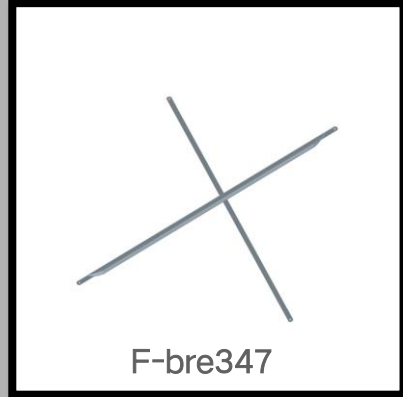
Brace



F-bre344



F-bre345

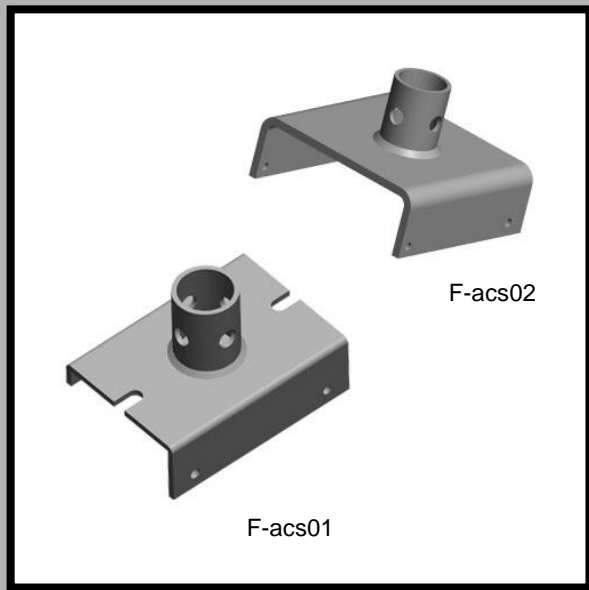


F-bre347

Part No.	Description	Unit Weight
F-bre344	Brace 3" 4" x 4"	5.32kg
F-bre345	Brace 3" 4" x 5"	6kg
F-bre347	Brace 3" 4" x 7"	7.52kg



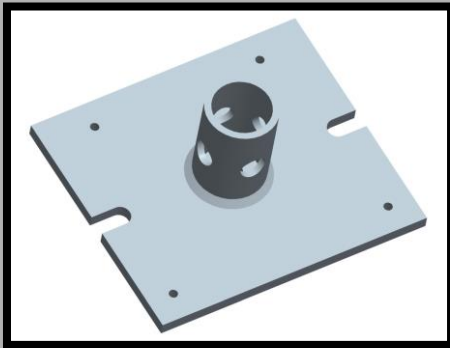
Accessories I



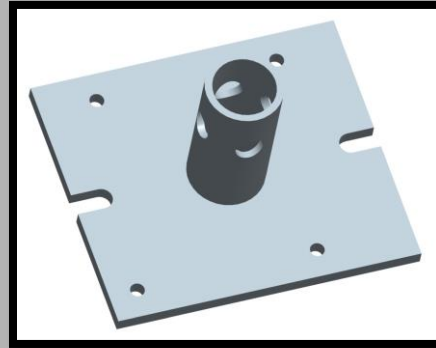
Part No.	Description	Unit Weight
F-acs01	SAR J Head	2.9kg
F-acs02	SAR U Head	6.08kg



Accessories II



F-acs03

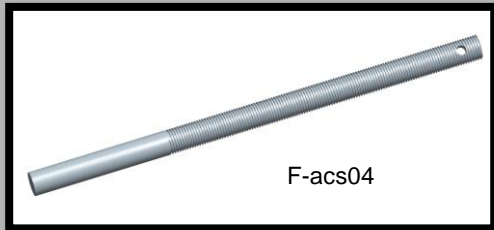


F-acs07

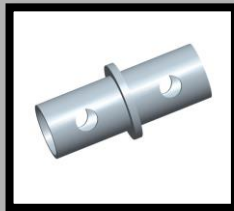
Part No.	Description	Unit Weight
F-acs03	SAR Base Plate	2.96kg
F-acs07	SAR Base Plate	3.01kg



Accessories III



F-acs05



F-acs06

Part No.	Description	Unit Weight
F-acs04	SAR Screw jack	6.02kg
F-acs05	SAR nailer	0.91kg
F-acs06	SAR connector	0.72kg



E-VANS



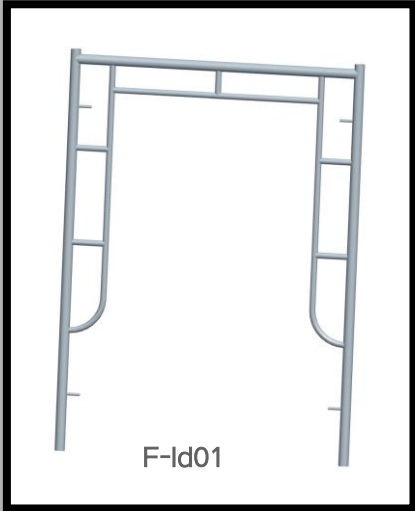
Frame-Light Duty

Light Duty scaffolds is a common type of scaffold because they are versatile, economical, and easy to use. They are frequently used in one or two tiers by residential contractors, painters, etc. We can provide any size according to your order the surface treatment has two choice: Powder coating or Painting.

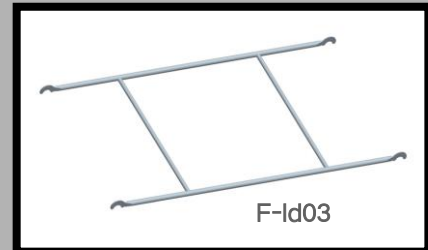
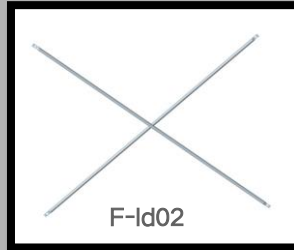


E-VANS

Light Duty - I



Part No.	Description	Unit Weight
F-Id01	SAR Vertical Frame	11.2kg
F-Id02	Cross Brace	3.15kg
F-Id03	Ledger	7kg
F-Id04	Join Pin	0.24kg
F-Id05	U-head jack 600mm	3.06kg
F-Id06	Jack Base 600mm	3.16kg
F-Id07	Walkboard	11kg



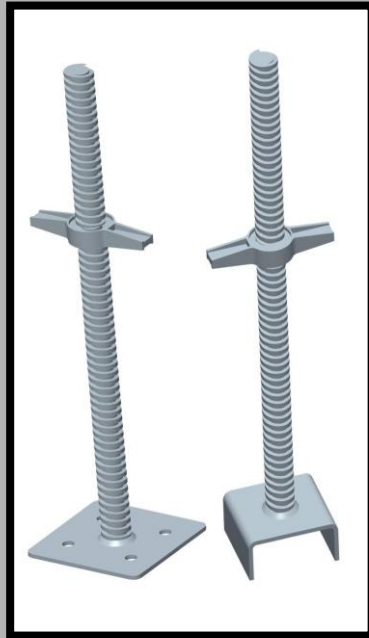


E-VANS

Light Duty - II



F-Id04



F-Id05

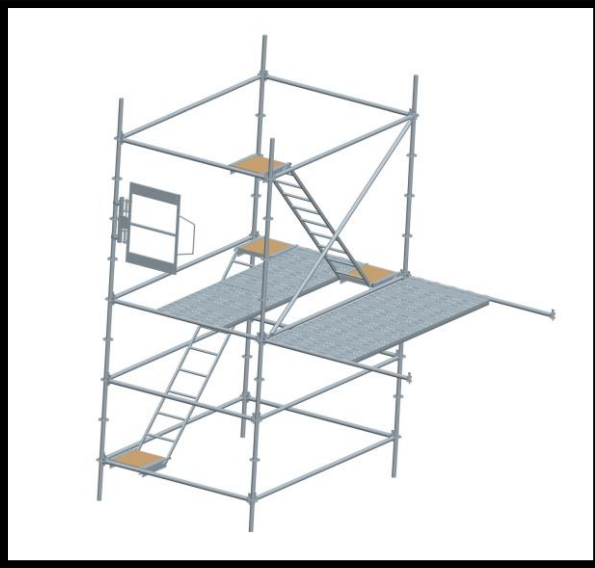
F-Id06



F-Id07



E-VANS



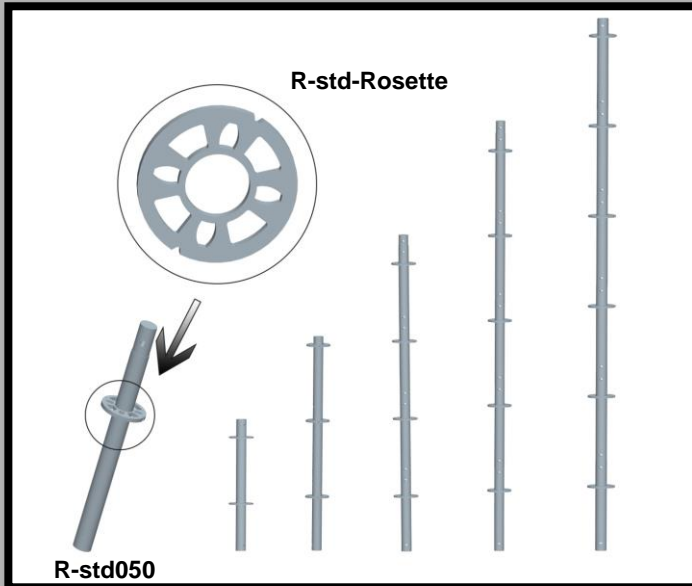
Ringlock

Ringlock System Scaffolding consists of galvanized high-strength steel modular components that are assembled together using integral wedge connectors. The system has a complete range of accessories, including: steel planks, side brackets, system toe boards, stairs, ladders and reinforced ledgers.



E-VANS

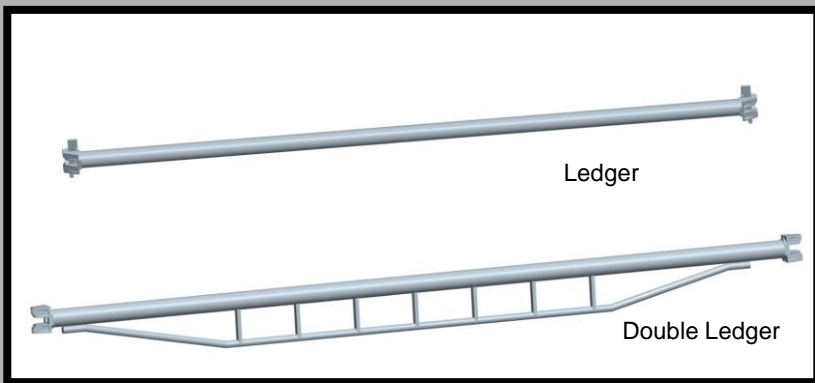
Standard



Part No.	Description	Unit Weight
R-std050	0.5m Standard	3.4kg
R-std100	1m Standard	5.4kg
R-std150	1.5m Standard	8kg
R-std200	2m Standard	10.2kg
R-std300	3m Standard	15.3kg
R-std-Rosette	Forged Rosette	



Ledger



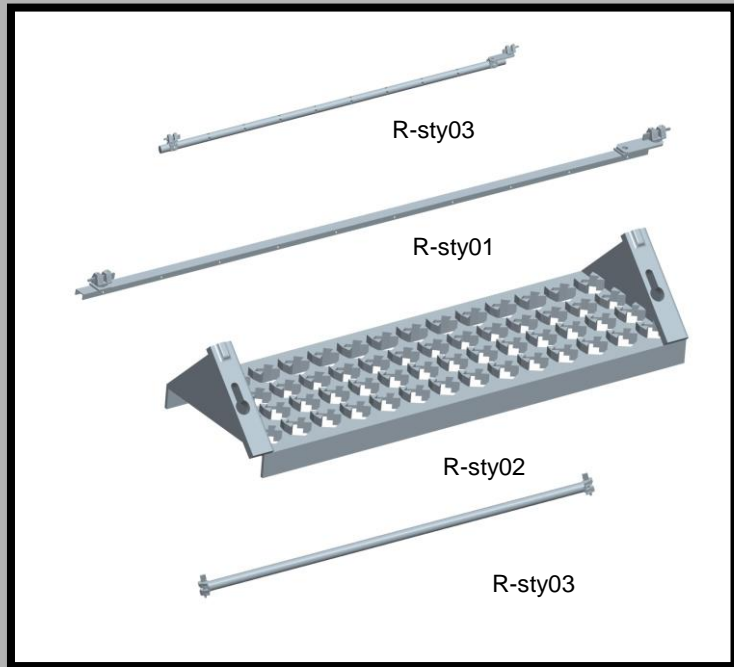
Part No.	Description	Unit Weight	Part No.	Description	Unit Weight
R-led065	0.65m Ledger	3.2kg	R-led213	2.13m Ledger	8.5kg
R-led115	1.15m Ledger	5kg	R-led305	3.05m Ledger	11.8kg
R-led157	1.57m Ledger	6.5kg	R-dled305	3.05m Double Ledger	22.7kg



E-VANS

Stair Way

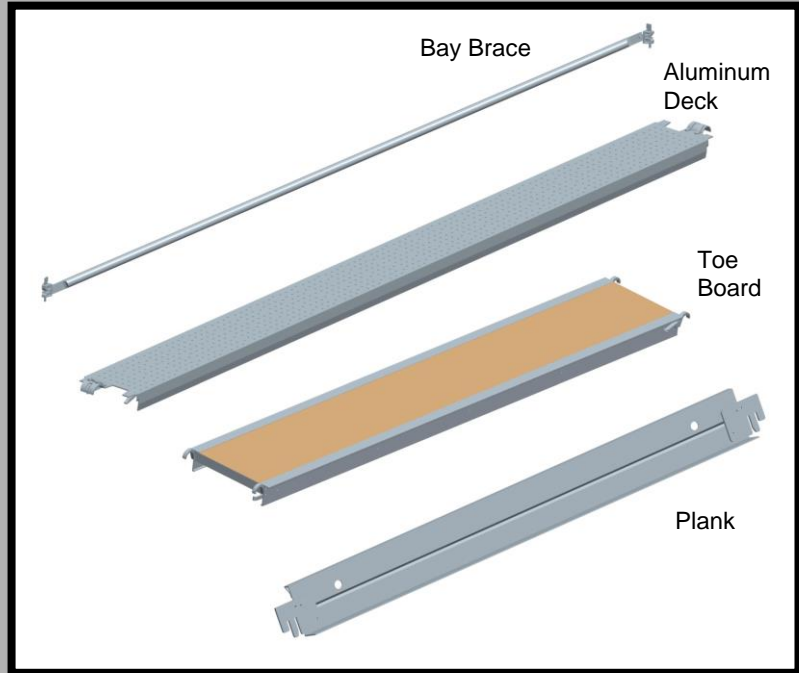
Part No.	Description	Unit Weight
R-sty01	7' Stair Stringer	20.5kg
R-sty02	Stair tread	4.6kg
R-sty03	3'6" Stair Stringer	11.2kg
R-sty04	1.07m Ledger	4.6kg





E-VANS

Bay Brace
Plank
Aluminum Deck
Toe Board





E-VANS

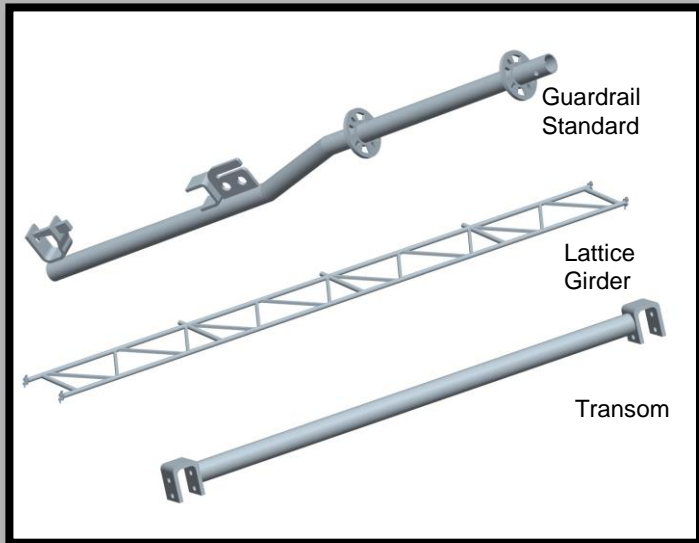
Bay Brace			Aluminum Deck		
Part No.	Description	Unit Weight	Part No.	Description	Unit Weight
R-bbr305	3.05m Bay Brace	10.6kg	R-Aplk305	3.05m Plywood Deck	18.6kg
R-bbr213	2.13m Bay Brace	9.8kg	R-Aplk213	2.13m Plywood Deck	12.3kg
R-bbr157	1.57m Bay Brace	7.8kg	R-Aplk157	1.57m Plywood Deck	9.8kg
R-bbr115	1.15m Bay Brace	6.8kg	R-Aplk115	1.15m Plywood Deck	7.2kg
Plank			Toe Board		
Part No.	Description	Unit Weight	Part No.	Description	Unit Weight
R-spk305	3.05m Steel Plank	20kg	R-tbd305	3.05m Toe Board	10.6kg
R-spk213	2.13m Steel Plank	14.1kg	R-tbd213	2.13m Toe Board	7.4kg
R-spk157	1.57m Steel Plank	10.8kg	R-tbd157	1.57m Toe Board	5.6kg
R-spk115	1.15m Steel Plank	8.4kg	R-tbd115	1.15m Toe Board	4.2kg
R-spk065	0.65m Steel Plank	5.5kg	R-tbd065	0.65m Toe Board	2.3kg



E-VANS

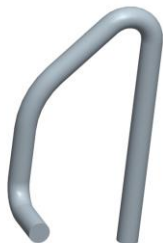
Accessories I

Part No.	Description	Unit Weight
R-gstd	Guardrail Standard	8.4kg
R-acs20	21' Lattice Girder	76kg
R-acs21	28' Lattice Girder	96kg
R-acs22	2.13m Transom	9.11kg
R-acs23	1.57m Transom	7.08kg
R-acs24	1.15m Transom	5.55kg

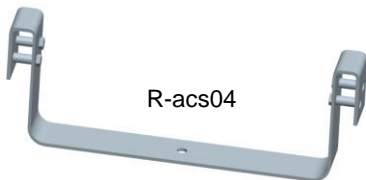




Accessories II



R-acs11



R-acs04



R-acs01



R-acs02



R-acs19

R-acs09

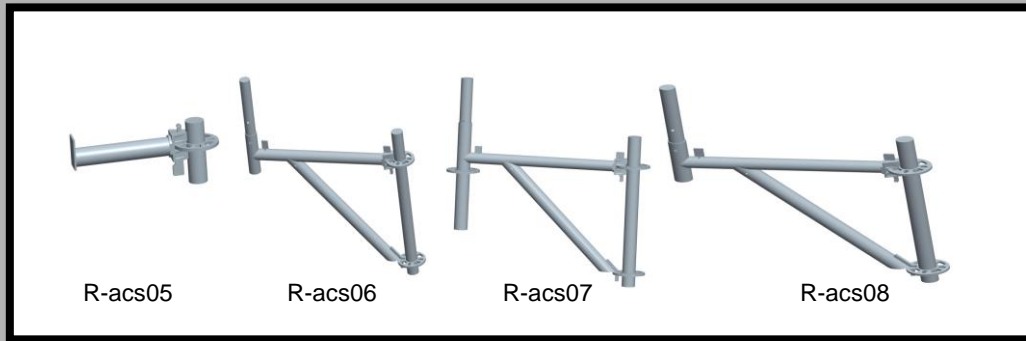


E-VANS

Part No.	Description	Unit Weight
R-acs01	Base Collar	1.6kg
R-acs02	Adj Base Jack	3.8kg
R-acs04	Universal Ladder Bracket	2.8kg
R-acs09	One Pane Safety Gate	12.5kg
R-acs11	Lock Pin	0.25kg
R-acs19	12" Caster Wheel	20.18kg



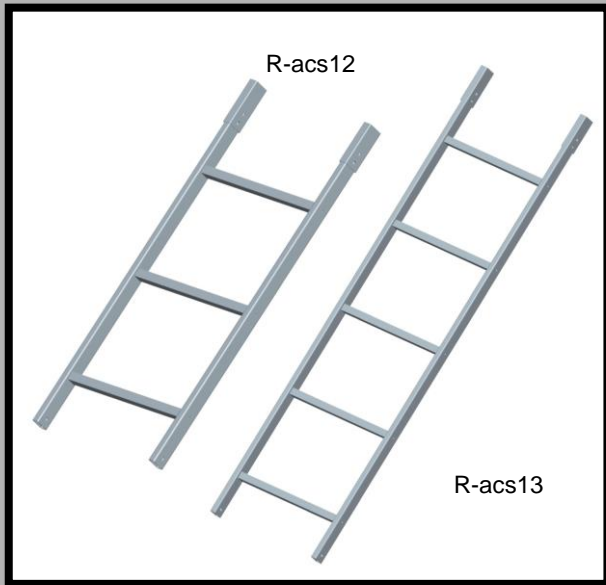
Accessories III



Part No.	Description	Unit Weight
R-acs05	One Board Side Bracket	1.7kg
R-acs06	Two Board Side Bracket	7kg
R-acs07	Three Board Side Bracket	8.7kg
R-acs08	Four Board Side Bracket	13.1kg



Accessories IV

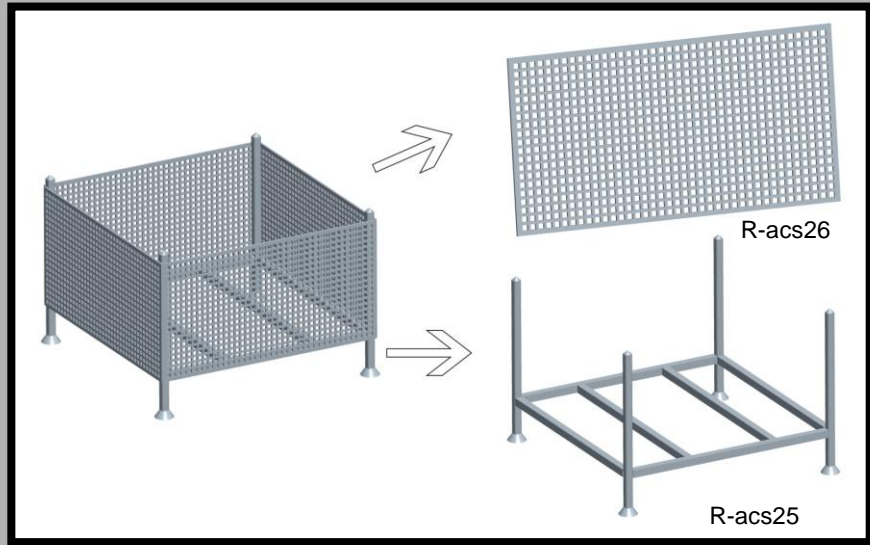


Part No.	Description	Unit Weight
R-acs12	3' Ladder	7.3kg
R-acs13	5' Ladder	10.2kg



E-VANS

Accessories V



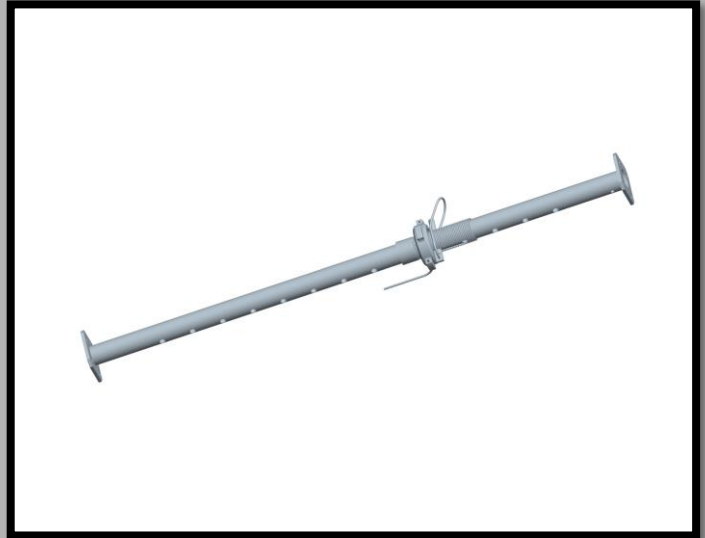
Part No.	Description	Unit Weight
R-acs25	Shipping Rack	45kg
R-acs26	Shipping Basket	65kg



Props

The prop provides a higher load capacity than most post shores. Our prop is engineered to deliver the required level of support for most shoring applications.

Note: Allowable working loads may vary depending on required safety factors in accordance with local regulations.





E-VANS

Product Procedure



Raw
Material



Production



Final
Inspection



Packing



Shipping





Product Procedure

- To cover all the key processes
- Our production procedures covered the raw material inspection, cutting, punching, welding, galvanizing and packing process.
- Guidance to the production
- With the detail requirements in the document, the worker can understand the acceptance criteria easily.

For our products, we will develop the procedures.





Product Procedure

- Develop the welding documents per AWS D1.1
We develop the welding acceptance criteria per AWS D 1.1
- Complete the WPS/PQR/WPQ for all our products
We qualified all the welding procedures, also we will qualify the welders before they start their work.

Welding Procedure Management.





Product Procedure

- Training at least twice a month

We will have the training classes twice a month, concerning different areas related to the production.

- Weekly meeting with the production management team

The management team will have a weekly meeting to summary the weekly status.

Constant training to the production team.





Product Procedure

- Weekly visit to the production line
- Our inspectors are performing the routing inspection:
- 1) To find if there are any problems;
 - 2) To get the production status report
- Continue to improve the production procedures
- We are still improving all our procedures to save the time and money for both our clients and us.

Supervisor the key process to make sure the procedures were executed
Constant improvement of all the procedures





Quality System

- **Raw material control**

 - Review all the MTRs

 - Material receipt inspection and verification

 - We will review and accept the MTRs before the raw material receipt at our warehouse, also we will randomly test the chemical and physical properties in the independent labs, such as SGS, TUV for verification.

- **Production Control**

 - Inspection during the production

 - The inspector will have to routing the production line, and take the inspection records during the production.

- **Category the products**

 - We separate the good products and bad products during the production, so the rejected products will not go to the next step.

- **Self-inspection system**

 - In our production line, all the workers are the inspectors, when they receive the parts from their previous procedure, they will inspect and accept before they start their own job.



Quality System

- **Final Inspection**

- Review all the QA documents

- QA release

- For each product, before packing, we will conduct the final inspection and issue the QA release before they are packed.

- **Package and shipping**

- Make sure the products were well packed

- We will select the best packing plan to make sure the products were well protected during the transportation.



THANKS

EVANS2016